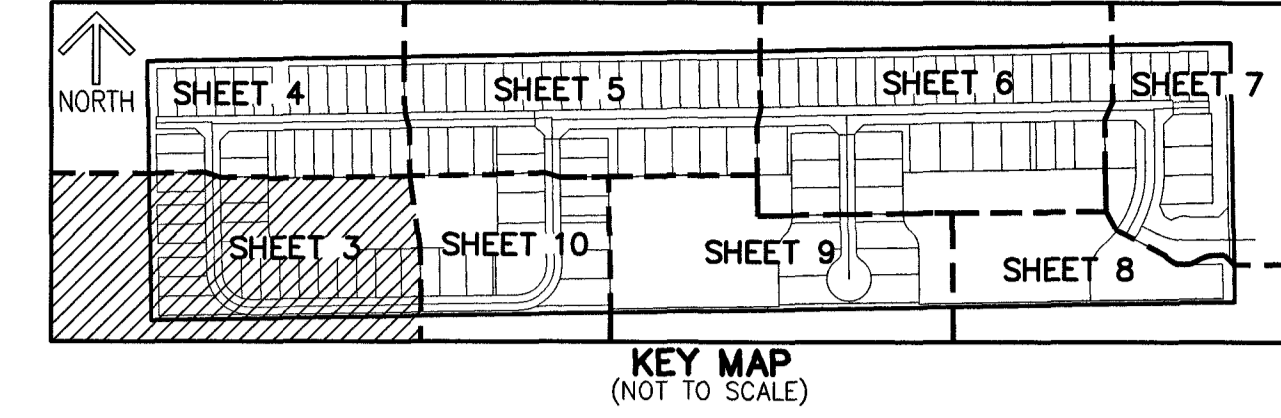


# GREYHAWK LANDING

BEING A REPLAT OF ALL OF TRACTS 81 THROUGH 88, AND A PORTION OF TRACT 80, BLOCK 43, PALM BEACH FARMS COMPANY PLAT NO. 3, ACCORDING TO THE PLAT THEREOF RECORDED IN PLAT BOOK 2, PAGE 45 OF THE PUBLIC RECORDS OF PALM BEACH COUNTY, FLORIDA, SAID PARCEL INCLUDING THE NORTHERLY 15.00 FEET OF THE 30 FOOT ROAD, DITCH AND DIKE RESERVATION AREA LYING IMMEDIATELY SOUTH OF AND CONTIGUOUS WITH THE SOUTH LINE OF SAID TRACTS 81 THROUGH 88 AND A PORTION OF TRACT 80, AND ALSO THAT PORTION OF THE ROAD, DITCH AND DIKE RESERVATION AREA LYING BETWEEN SAID TRACTS 80 & 81, LYING IN SECTION 7, TOWNSHIP 45 SOUTH, RANGE 42 EAST, PALM BEACH COUNTY, FLORIDA

THIS INSTRUMENT PREPARED BY  
DAVID P. LINDLEY  
OF  
**CAULFIELD & WHEELER, INC.**  
SURVEYORS - ENGINEERS - PLANNERS  
7900 GLADES ROAD, SUITE 100  
BOCA RATON, FLORIDA 33434 - (561)392-1991



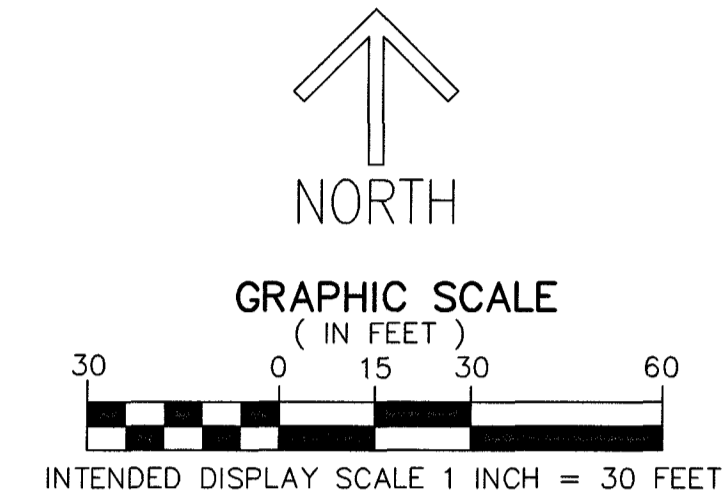
# 21

SHEET 3 OF 10

### LEGEND/ABBREVIATIONS:

- P.O.B. - POINT OF BEGINNING
- ESMT. - EASEMENT
- P.B. - PLAT BOOK
- O.R.B. - OFFICIAL RECORD BOOK
- PG(S). - PAGE(S)
- C - CENTERLINE
- Δ - DELTA (CENTRAL ANGLE)
- CB - CHORD BEARING
- CD - CHORD DISTANCE
- R - RADIUS
- L - ARC LENGTH
- C - CENTERLINE
- E - EASTING (WHEN USED WITH COORDINATES)
- N - NORTHING (WHEN USED WITH COORDINATES)
- DE - DRAINAGE EASEMENT
- L.A.E. - LIMITED ACCESS EASEMENT
- LME - LAKE MAINTENANCE EASEMENT
- LMAE - LAKE MAINTENANCE ACCESS EASEMENT
- L.B.E. - LANDSCAPE BUFFER EASEMENT
- MOHE - MAINTENANCE AND OVERHANG EASEMENT
- PBCUE - PALM BEACH COUNTY UTILITY EASEMENT
- PDE - PUBLIC DRAINAGE EASEMENT
- UE - UTILITY EASEMENT
- PC - POINT OF CURVATURE
- PT - POINT OF TANGENCY
- PNT - POINT OF NON-TANGENCY
- PRC - POINT OF REVERSE CURVATURE
- P.U.D. - PLANNED UNIT DEVELOPMENT
- LB - LICENSED BUSINESS
- (N/R) - NON-RADIAL
- PRAS - PRIVATE RESIDENTIAL ACCESS STREET
- NAD - NORTH AMERICAN DATUM
- PRM - PERMANENT REFERENCE MONUMENT
- R/W - RIGHT-OF-WAY
- ▶ - INDICATES "ZERO" SIDE OF LOT LINE
- PRM - DENOTES SET PERMANENT REFERENCE MONUMENT 4" X 4" X 24" CONCRETE MONUMENT WITH ALUMINUM DISK STAMPED "C&W PRM LB3591" UNLESS OTHERWISE NOTED
- PCP - DENOTES PERMANENT CONTROL POINT NAIL AND METAL DISK STAMPED "PCP LB3591"

**NOTES**  
**COORDINATES, BEARINGS AND DISTANCES**  
 COORDINATES SHOWN ARE GRID  
 DATUM = NAD 83 1990 ADJUSTMENT  
 ZONE = FLORIDA EAST  
 LINEAR UNIT = U.S. SURVEY FEET  
 COORDINATE SYSTEM 1983 STATE PLANE  
 TRANSVERSE MERCATOR PROJECTION  
 ALL DISTANCES ARE GROUND, UNLESS OTHERWISE NOTED  
 SCALE FACTOR = 1.0000217  
 GROUND DISTANCE X SCALE FACTOR = GRID DISTANCE

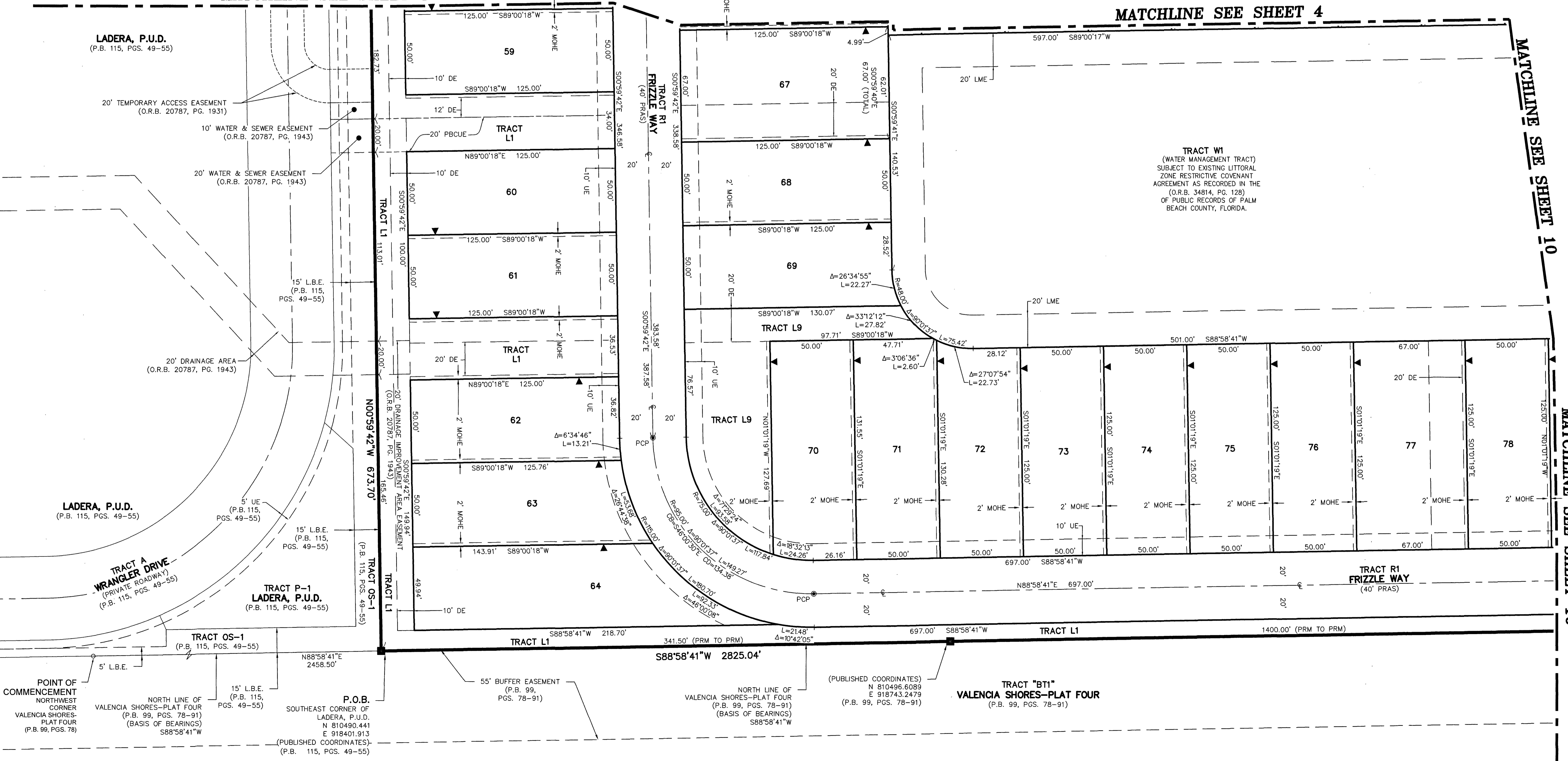


MATCHLINE SEE SHEET 4

MATCHLINE SEE SHEET 4

MATCHLINE SEE SHEET 10

MATCHLINE SEE SHEET 10



LADERA, P.U.D.  
(P.B. 115, PGS. 49-55)

LADERA, P.U.D.  
(P.B. 115, PGS. 49-55)

TRACT P-1  
LADERA, P.U.D.  
(P.B. 115, PGS. 49-55)

TRACT OS-1  
(P.B. 115, PGS. 49-55)

TRACT OS-1  
(P.B. 115, PGS. 49-55)

TRACT L1

TRACT L1

TRACT L1

TRACT R1  
FRIZZLE WAY  
(40' PRAS)

TRACT "BT1"  
VALENCIA SHORES-PLAT FOUR  
(P.B. 99, PGS. 78-91)

POINT OF COMMENCEMENT  
NORTHWEST CORNER  
VALENCIA SHORES-  
PLAT FOUR  
(P.B. 99, PGS. 78)

NORTH LINE OF  
VALENCIA SHORES-PLAT FOUR  
(P.B. 99, PGS. 78-91)  
(BASIS OF BEARINGS)  
S88°58'41"W

15' L.B.E.  
(P.B. 115, PGS. 49-55)

P.O.B.  
SOUTHEAST CORNER OF  
LADERA, P.U.D.  
N 810490.441  
E 918401.913  
(PUBLISHED COORDINATES)  
(P.B. 115, PGS. 49-55)

55' BUFFER EASEMENT  
(P.B. 99, PGS. 78-91)

NORTH LINE OF  
VALENCIA SHORES-PLAT FOUR  
(P.B. 99, PGS. 78-91)  
(BASIS OF BEARINGS)  
S88°58'41"W

(PUBLISHED COORDINATES)  
N 810496.6089  
E 918743.2479  
(P.B. 99, PGS. 78-91)

TRACT W1  
(WATER MANAGEMENT TRACT)  
SUBJECT TO EXISTING LITTORAL  
ZONE RESTRICTIVE COVENANT  
AGREEMENT AS RECORDED IN THE  
(O.R.B. 34814, PG. 128)  
OF PUBLIC RECORDS OF PALM  
BEACH COUNTY, FLORIDA.